

# SCHEDULE OF AREAS

	OFFICE NIA SQ FT (SQ M)	RETAIL   GALLERY/CAFÉ NIA SQ FT (SQ M)
<b>NINTH FLOOR</b>	<b>PRE-LET</b>	
<b>EIGHTH FLOOR</b>	<b>PRE-LET</b>	
<b>SEVENTH FLOOR</b>	<b>PRE-LET</b>	
<b>SIXTH FLOOR</b>	<b>PRE-LET</b>	
<b>FIFTH FLOOR</b>	6,017 (559) <b>UNDER OFFER</b>	
<b>FOURTH FLOOR</b>	5,984 (556)	
<b>THIRD FLOOR</b>	5,984 (556)	
<b>SECOND FLOOR</b>	6,006 (558)	
<b>FIRST FLOOR</b>	5,834 (542)	
<b>GROUND FLOOR</b>	1,098 (102) RECEPTION	4,424 (411) GALLERY UNIT (3,261 SQ FT/303 SQ M) HIGH CLASS CAFÉ / RETAIL (1,163 SQ FT/108 SQ M)
<b>LOWER GROUND FLOOR</b>		2,895 (269) GALLERY UNIT (1,905 SQ FT / 177 SQ M) HIGH CLASS CAFÉ / RETAIL (990 SQ FT / 92 SQ M)
<b>TOTAL</b>	30,923 (2,873)	7,319 (680)

\* FLOORS STILL SUBJECT TO MEASUREMENT



# FLOORPLANS

## LOWER GROUND FLOOR



LOWER GROUND FLOOR NIA 2,895 SQ FT (269 SQ M)

● RETAIL/OFFICE SPACE ● COMMON PARTS



FOR INDICATIVE PURPOSES ONLY, NOT TO SCALE

# FLOORPLANS

## GROUND FLOOR



GROUND FLOOR NIA 4,424 SQ FT (411 SQ M)

● RETAIL/OFFICE SPACE    ● COMMON PARTS    ● RECEPTION (102 SQ M)

FOR INDICATIVE PURPOSES ONLY, NOT TO SCALE



# FLOORPLANS

## FIRST FLOOR



1ST FLOOR NIA 5,834 SQ FT (542 SQ M)

● RETAIL/OFFICE SPACE ● COMMON PARTS



FOR INDICATIVE PURPOSES ONLY, NOT TO SCALE

# FLOORPLANS

## SECOND FLOOR



2ND FLOOR NIA 6,006 SQ FT (558 SQ M)

● RETAIL/OFFICE SPACE ● COMMON PARTS



FOR INDICATIVE PURPOSES ONLY, NOT TO SCALE

# FLOORPLANS

## THIRD FLOOR



3RD FLOOR NIA 5,984 SQ FT (556 SQ M)

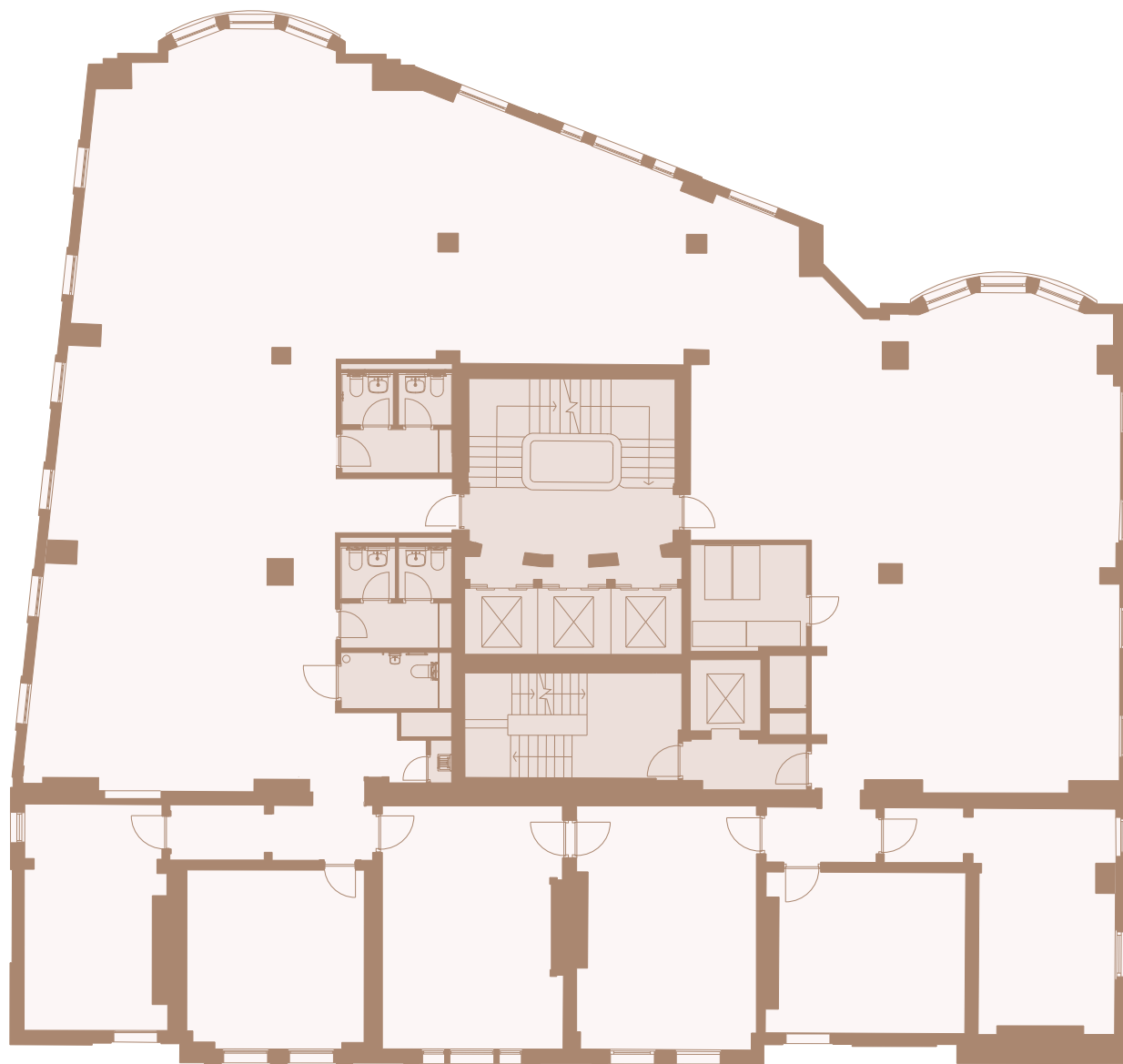
● RETAIL/OFFICE SPACE ● COMMON PARTS



FOR INDICATIVE PURPOSES ONLY, NOT TO SCALE

# FLOORPLANS

## FOURTH FLOOR



4TH FLOOR NIA 5,984 SQ FT (556 SQ M)

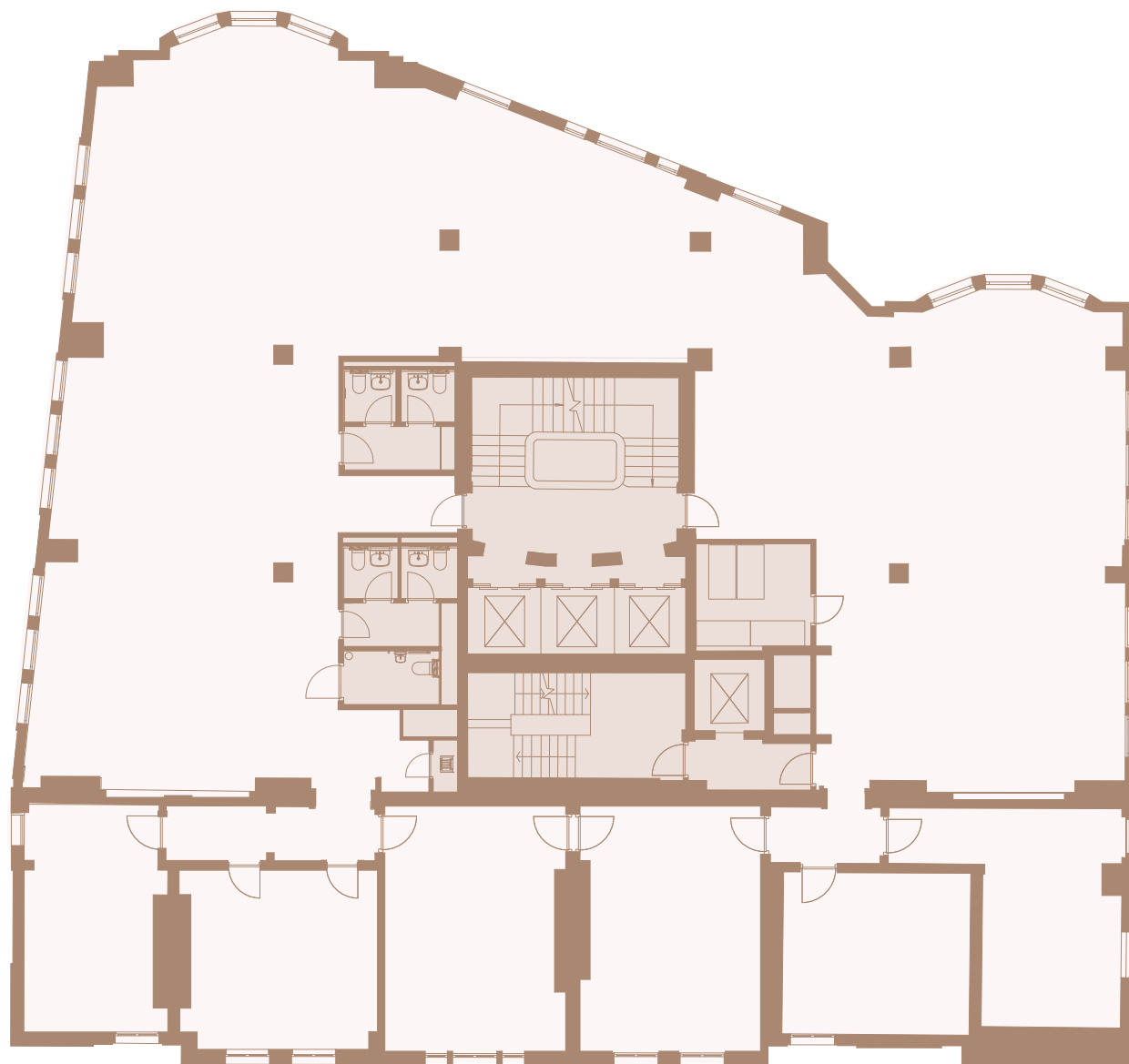
● RETAIL/OFFICE SPACE ● COMMON PARTS



FOR INDICATIVE PURPOSES ONLY, NOT TO SCALE

# FLOORPLANS

## FIFTH FLOOR



**UNDER OFFER**

5TH FLOOR NIA 6,017 SQ FT (559 SQ M)

● RETAIL/OFFICE SPACE ● COMMON PARTS



FOR INDICATIVE PURPOSES ONLY, NOT TO SCALE